

The logo for ENHAR (European Network for Housing Research) features the letters 'ENHAR' in a bold, grey, sans-serif font. The letters are interconnected, with the 'N' and 'H' sharing a vertical stroke. The logo is set against a white background with a red diagonal line cutting across it from the top right to the bottom left.

ENHAR

European Network for Housing Research

The background of the cover is a photograph of a multi-story residential building with balconies and plants. A large, semi-transparent white graphic of the number '2' is overlaid on the left side of the image. The sky is clear blue.

**2020
Newsletter**

Cover photo: housing in Athens (Greece), city of ENHR's annual conference in 2019

CONTENTS

Newsletter 2/2020



EDITORIAL.....	3
HIGHLIGHTS COORDINATION COMMITTEE MEETING.....	5
CANDIDATES TO THE ENHR COORDINATION COMMITTEE	7
FEE PAYMENT 2020 (AND 2021 AND 2022).....	9
ENHR CONFERENCES	10
NICOSIA 2021: UNSETTLED SETTLEMENTS: HOUSING IN UNSTABLE CONTEXTS.....	10
BARCELONA 2022: THE RIGHT TO HOUSING STRUGGLE: CITIES UNDER THE GLOBALIZATION PRESSURES ON AFFORDABILITY JUSTIFICATION	11
LODZ 2023: URBAN REGENERATION – ITS SHINES AND SHADOWS	11
ENHR WORKING GROUPS	13
NEWS FROM WORKING GROUPS	13
NEWS FROM MEMBERS	15
NEWS FROM INSTITUTIONAL AND ASSOCIATE INSTITUTIONAL MEMBERS	15
OTHER NEWS	23
NEW MEMBERS - WELCOME.....	24
NEW BOOKS / STUDIES	25
CALENDAR.....	26
WHO IS WHO?.....	28
COORDINATION COMMITTEE	28
INSTITUTIONAL MEMBERS.....	29
WORKING GROUPS AND COORDINATORS	33
ENHR’S COOPERATIONS	36



EDITORIAL

Unsettled settlements: Housing in unstable contexts

After a very careful consideration of all the facts related to the Coronavirus pandemic, the related restrictions in travel and the aftereffects to the Global Economy, the Local Organizing Committee in collaboration with the ENHR Coordination Committee, have decided to reschedule the 2020 conference to August/September 2021, still to be held in Nicosia (Cyprus). Cyprus will host the yearly ENHR conference (cyprusconferences.org/enhr2020/) for the first time.

Located in the Eastern Mediterranean, Cyprus offers a unique venue at the confluence of three continents and a multitude of cultures that face unique housing challenges. Many of these challenges are the result of not only long-standing local housing issues but also of issues that have emanated from recent conflicts in the surrounding region. In this region of intense conflict, Cyprus offers a common ground for bringing people together in a neutral venue and it has acted thus numerous times in its past.

The island country itself is dealing with current housing issues derived from the movement of refugees and other transient populations in the region to the island on one hand, to the influx of such populations as Russian and Chinese investors seeking luxury housing in its coastal cities and other groups of varying means seeking secondary housing and EU residency, on the other. In the past it had dealt with issues of its own refugee crisis and settlements that came out of it, to aspects of providing housing as a result of increasing urbanization and abandonment of traditional settlements in the rural areas, to the need for providing social housing to house an increasing number of people facing serious housing challenges as a result of the recent economic crisis. Housing rehabilitation, neighbourhood infrastructure and related services have thus been central in the local and national agendas, providing a unique opportunity for research and scientific knowledge to contribute towards this end.

Nicosia, the last divided capital of Europe, with a prolonged history of conflict, internal refugees' displacements, migration and tourists' flows, economic fluctuations and rapid, often abrupt urban transformations serves as an ideal laboratory to explore, unravel, and question housing development in unstable and contested contexts. It is a city of contrasts in terms of its spatial, social, cultural and economic composition. The city provides a valuable case study for housing researchers and can unveil the complexity of all the factors which condition the various forms of dwelling in contemporary contested, continuously transforming contexts.

Having as a starting point the complexity of the factors that have shaped Nicosia through time, the 2021 conference seeks to understand conditions of the unsettled and the respective challenges posed to housing. Contemporary everyday life is characterized by diverse manifestations of instability, including urban conflicts and contestations, revolutions in political life, terrorism, migration, displacements and mobility, which continuously challenge and redefine cities' infrastructures. The involuntary removal of individuals or communities from their houses, lands, localities, rights or belongings, experienced in many parts of our contemporary world, creates new urban instabilities and conflicts. The experience of urban life in such contexts –

transient, fragmented, changeable and unpredictable – contrasts to concepts of dwelling based on stability, permanence, locality and a sense of belonging. Such unsettling practices simultaneously challenge the production of housing environments and dwellings which many times takes place against a backdrop painted by uncertainty and change. The proposed conference topic aims to explore and understand uncertainties and instabilities which shape contemporary urban living, to unveil critical concerns on the impact of such unsettling practices on the production of housing environments and to foster an inquiry into potential responses in the form of policies, governance, social innovation, community initiatives and planners' investments.

The conference within the framework of ENHR aims to provide a discussion platform for researchers, policy makers and practitioners concerned with housing issues. Researchers at the University of Cyprus (UCY), host for the conference, recognize the importance of strengthening even further the bridge between research, practice and policymaking to create opportunities to inform local, national and international agendas. UCY established in 1989, is a vigorous community of scholars engaged in the generation and diffusion of knowledge, it comprises eight Faculties and 22 Departments offering a wide range of undergraduate, postgraduate and research study programs and is a member of the international network of universities and an active participant in the research community worldwide (www.ucy.ac.cy/en/). A significant local critical mass in housing research and allied fields at UCY pursue research themes aligned with the conference's themes, offering the opportunity of deliberation in a multidisciplinary approach.

Speakers in the plenary sessions will cover topics such as displaceability and the effects of urban renewal on households, housing policy transformations and urban governance, the (changing) role of housing in the production of inequalities, housing as a financial asset, housing as a commodity and the right to housing is the right to health as well as housing measures, effects and impact due to the Covid epidemic.

On behalf of the Local Organizing Committee, I look forward to welcoming you in Nicosia, unfortunately not in 2020, but most certainly in 2021.

Nadia Charalambous
Chair, Local Organizing Committee, ENHR 2021 conference

Highlights Coordination Committee Meeting

Nicosia meeting, 8-9 November 2019

Organisation

Since 7 October 2019 ENHR is registered as an organization. A bank and savings account have been opened at ING Bank. Marietta Haffner volunteered for the post of Secretary in the Executive Board until CC elections in 2020. According to the Bylaws the Office is called Secretariat from now on. The coordinator will be called 'Office coordinator of the Secretariat' from now on.

Fees

The fees for 2020 will raise with 1.7% according to Dutch inflation over 2018. The free membership from the end of conferences until the end of the year (for individual members) and from the end of the conference until 1 October (for (A)IMs) will be promoted more intensely on the website and the conference website. A discount can be enjoyed by a two or three-year membership as annual fee raises will be avoided during these membership terms. This too will be promoted.

Budget

The budget for 2020 was also accepted, including an Office budget raise with € 5000 to € 25.000.

Working Group Coordinator changes

Elena Bargelli stepped down and Dimitra Siatitsa (Harokopeio University in Athens, Greece) and Héctor Simón-Moreno (University Rovira i Virgili in Tarragona, Spain) are accepted as new coordinators of WG Southern European Housing.

WG Coordinators meeting

The CC was satisfied with the WG Coordinators meeting held at the Athens conference and its number of participants. It was decided to organise such a meeting during the Nicosia conference as well. More time will be reserved for this meeting during the conference.

Bengt Turner Award

The papers that entered the BTA competition in Athens were not up to standard according to the CC, as was also the case at the Tirana conference two years ago. Several options were discussed to revive the award which led to two decisions: (a) more than one author will be allowed, (b) the 'suitable academic/professional level' criterion will be replaced by 'acceptable academic/professional level'.

Zoom meeting, 24 April 2020

The CC met by means of video conference. Lora Nicolaou (LOC Nicosia) represented Nicosia LOC chair Nadia Charalambous during this session.



Zoom seminar proposal

The CC suggests a collective response of some kind and asking input from the Working Groups. An ENHR zoom seminar about the impact of Covid-19 on the housing market and the housing research agenda could be organised, as suggested by ENHR member Christian Lennartz.

ENHR conferences

The Nicosia LOC and the CC decided that the ENHR conference 2020 in Nicosia will take place at the end of August/beginning of September 2021, preferably at the university campus, as was originally the plan. The Nicosia LOC would prefer the same conference theme and program as was scheduled for this year, but will include the effects of covid-19 on the housing markets as a subject.

The ENHR conference 2022 will be organised by the Polytechnic University of Barcelona. The bid (the only one received) is considered a serious and well-prepared one. The chair of the Local Organising Committee prof. Montaner will join the CC as an ad hoc member as of November 2020.

The originally scheduled ENHR conference 2021 in Lodz (Poland) will take place in 2023. As the bid by the University of Lodz has been accepted and the Lodz LOC is willing to postpone the conference, no call for the 2023 conference will be issued.

Fee handling and financial administration

The Secretariat will remain handling the fee collection and financial administration. This would have been outsourced to a third party, but the collection and administration now prove an acceptable workload.

The Financial overview and Financial statement over 2019 are approved.

Annual Report 2019

The Annual Report 2019 has not been discussed yet as no annual reports were received from four WGs, including the WG in preparation.

New WG coordinators

The following new coordinators have been agreed upon: Maja Lorbek (WG Residential Buildings and Architectural Design) and Marco Peverini (WG Social Housing: Organisations, Institutions and Governance).

Coordination Committee elections

A total of 13 nominations have been received for a CC seat during 2020-2024, all valid. Ten seats are available. The Secretariat will prepare and organise the elections. CVs, motivation and photos of the candidates will be published in Newsletter 2 and on the website.

Additionally, candidates are free to promote themselves, but they will not be supported by the Secretariat.

CANDIDATES TO THE ENHR COORDINATION COMMITTEE

2020 Elections

Thirteen ENHR members have been nominated for a seat in the Coordination Committee (CC) by a fellow ENHR member. All have accepted their nomination (round 1).

The CC administers our network and consists of a maximum of fifteen members. In case the number of nominated candidates surpasses the number of places available in the Coordination Committee – as is the case for the upcoming 2018-2022 term when ten seats are available – a second round takes place in which ENHR members may cast their vote. Members from outside Europe, members through Associated Institutional Members and non paid-up members for 2020 are excluded from voting and will not receive an invitation by e-mail in June, to vote. You can cast your vote on any of the following candidates, but with a minimum of five and a maximum of ten candidates.

The elections end on 29 June 2020, 17:30h, during the General Assembly. The results of the elections will be declared there.

CV's and motivations of all candidates: www.enhr.net/elections.php (log in).

ENHR Election Committee

Gerard van Bortel

Lars Gulbrandsen

Dirk Dubbeling (ENHR Secretariat)

enhr@tudelft.nl



Peter Boelhouwer

Discipline: Geography

Country: The Netherlands



Claire Carriou

Discipline: Urban planning

Country: France



Jennifer Duyne

Barenstein Discipline:

anthropology

Country: Switzerland



Terry Hartig

Discipline: Environmental

psychology

Country: Sweden



Jesper Ole Jensen

Discipline: Urban regeneration and sustainability
Country: Denmark



Lena Magnusson Turner

Discipline: Geography
Country: Norway



Jaana Nevalainen

Discipline: Urban and human geography
Country: Finland



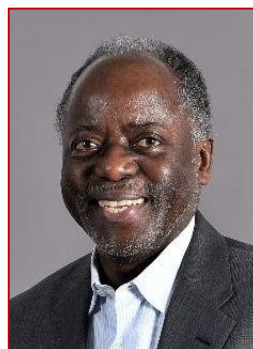
Montserrat Pareja-Eastaway

Discipline: Economics
Country: Spain



Kath Scanlon

Discipline: Economics
Country: United Kingdom



Richard Sendi

Discipline: Architecture/
Policy Studies
Country: Slovenia



Mark Stephens
Discipline: Economics
Country: United Kingdom



Catalina Turcu
Discipline: Architecture
and Planning
Country: United Kingdom



Richard Turkington
Discipline: Sociology
Country: United Kingdom

Fee payment 2020 (and 2021 and 2022)

Dear ENHR members,

A substantial number of institutes and individual members did not respond to the fee payment calls this spring. Don't let the covid-19 crisis affect the continuation of ENHR. The association needs your contribution.

Dirk Dubbeling,
ENHR Secretariat

ENHR CONFERENCES

Nicosia 2021: Unsettled settlements: Housing in unstable contexts

Having as a starting point the complexity of the factors that have shaped Nicosia through time, the conference seeks to understand conditions of the unsettled and the respective challenges posed to housing. Contemporary everyday life is characterized by diverse manifestations of instability, including urban conflicts and contestations, revolutions in political life, terrorism, migration, displacements and mobility, which continuously challenge and redefine cities' infrastructures. The experience of urban life in such contexts – transient, fragmented, changeable and unpredictable – contrasts to concepts of dwelling based on stability, permanence, locality and a sense of belonging, and has often been associated with an experience of displacement effect.

Displacement, a process of un-homing with an impact on the connection between people and place, has been at the core of a number of critical studies that address problems associated with gentrification, armed conflicts, and so on, which result in the socio-spatial restructuring of the existing inhabitants. The removal of individuals or communities from their houses, localities, memories and belongings, experienced in many parts of our contemporary world -whether this is voluntary or involuntary – often creates new urban instabilities, uncertainties and conflicts. Such unsettling practices simultaneously challenge the production of housing environments and dwellings which many times takes place against a backdrop painted by uncertainty and change. The proposed conference topic aims to explore and understand uncertainties and instabilities which shape contemporary urban living, to unveil critical concerns on the impact of such unsettling practices on the production of housing environments and to foster an inquiry into potential responses in the form of policies, governance, social innovation, community initiatives and planners' investments.



The umbrella topic aims to explore and understand uncertainties and instabilities which shape contemporary urban living, to unveil critical concerns on the impact of such unsettling practices on the production of housing environments and to foster an inquiry into potential responses in the form of policies, governance, social innovation, community initiatives and planners' investments.

Barcelona 2022: The Right to Housing Struggle: Cities under the Globalization Pressures on Affordability Justification

The situation of the housing market in cities like Barcelona expresses with crystal clarity the contradiction of the current globalization process. Different internal and external forces that combine to create a perfect storm are pressing the cities, revealing the limited capacity of the local governments to tackle the housing crisis. The Right to Housing is at stake.

One of the key drivers of this process is the financialization of the housing market. Producing the embeddedness of housing in volatile financial market cycles. The central question is: how to cut this house price-finance feedback? Going from the causes to the solutions, one hot topic in the current debate is rent control policy. The discussion is all about its effectiveness to control the rental bubble. Another key policy discussion is an intensifying shortage of affordable homes for lower income earners that is affecting all the global cities. How can governments and industry players most effectively nurture affordable housing supply?

Moving on, another new phenomenon to discuss is how touristification and gentrification are challenging the urban landscape of our cities. Finally, in response to the climate crisis, a new and innovative design for sustainable and energy-efficient housing will be discussed.

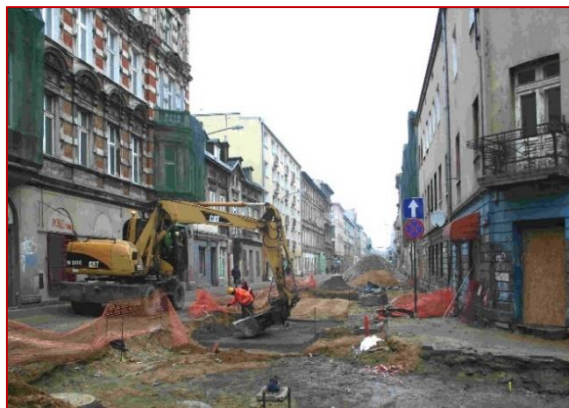
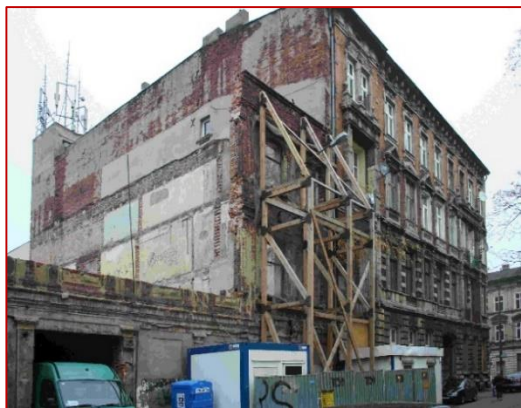


Lodz 2023: Urban regeneration – its shines and shadows

Lodz is a classic example of a city that was founded and developed thanks to the industrialization process of the nineteenth century, in particular textiles. Very favorable living conditions and the opportunity to work caused a significant influx of settlers. In 1840 the number of residents increased to 10,000. In 1900 the number of inhabitants of Lodz increased to 300,000, and in 1914 it approached 500,000 and set a world record for demographic growth. On the eve of the outbreak of World War II, the city's population reached 672,000. During the war, the city was not destroyed. After liberation, it served as the capital of the state for some time. The reconstruction of the textile industry contributed to the further development of Lodz, both economically and demographically. In 1989, the city had 851,700 residents. The political transformation had a robust and negative impact on the social and economic conditions in the city. First of all, the closure of industrial plants caused a very high level of

unemployment and an outflow of population.

Housing problems in Poland are very serious due to historical conditions, but also to the lack of a consistent and thought-out housing policy. Essentially, housing problems are pushed into the background, it is believed that in the market economy people should meet their housing needs without help of public bodies, and only a small group of the most vulnerable households should be given direct help.



ENHR WORKING GROUPS

Basic information concerning the aims, activities and membership of the various Working Groups is available on the ENHR website at www.enhr.net. In this section the Working Groups report on recent activities such as seminars (to be) held, books to be published, etc. The names and addresses of the coordinators are given at the end of the Newsletter in the Who is Who? section. Members of ENHR are encouraged to contact these persons in order to join a particular Working Group or to obtain further information about its activities.

News from Working Groups

WG Residential Buildings and Architectural Design

Birgit Jürgehake and Ahsen Ozsoy (coordinators)

The Working Group welcomes new WG coordinator Maja Lorbek.

WG Social Housing and Globalisation

Claire Levy-Vroelant, Christoph Reinprecht and Sasha Tsenkova (coordinators)

Call for papers: Partnerships for Affordable Rental Housing in Cities

We are seeking additional contribution for an edited book on cities and affordable housing. It brings together over 20 studies by ENHR members and other researchers exploring city-led strategies to increase the supply of affordable rental housing.

We acknowledge that the term 'affordable' housing can have different meanings in different contexts, but we use it in a broad sense to indicate rental housing for low- and moderate-income households. This includes 'social' and 'public' housing. Given the devolution of government involvement in housing, consensus has been building across Europe and North America that an effective response requires a multi-sectoral approach, including all levels of government, the private for-profit and non-profit sectors, as well as local communities. The last few years have seen large cities join their efforts with non-profit and private organisations to provide affordable rental housing in mixed-income, mixed-tenure projects. The practice is different depending on institutional arrangements, governance models and types of financial and regulatory support.

The diversity in the implementation process is an important manifestation of policy, planning and design innovation and resilience. Through this collaborative call for papers we would like to capture change and reflect on its implications, as well as explore growth in the provision of affordable housing through multi-sectoral partnerships. Interested researchers should send a 300-word abstract to Dr Sasha Tsenkova (tsenkova@ucalgary.ca) by May 28, 2020 to be included in this research project.

WG Social Housing: Organisations, Institutions and Governance

Anita Blessing, Gerard van Bortel and Nicky Morrison (coordinators)

The Working Group welcomes new WG coordinator Marco Peverini.
WG coordinator David Mullins stepped down.

NEWS FROM MEMBERS

News from Institutional and Associate Institutional Members



European Federation for Living (EFL)

www.ef-l.eu/

Although many countries are starting to gradually lift the most extreme lockdown measures and public life is slowly returning to 'normal', the situation is still far from normal. It's quite clear that working from home is now the new standard, some of the services which require personal contacts have been halted or only proceed with personal protective equipment and part of planned work on the properties (the buildings) have been postponed.

The European Federation for Living (EFL) has cancelled all of its physical gatherings until the Summer of 2020 and hopes to start up slowly in Autumn 2020. At the moment, it is still unclear what professional life will look like after the lockdown and when exactly international travelling will be possible again. EFL is now even more committed to supporting digital communication and cooperation. Therefore, we are focussing on new projects, set up with our members in the affordable housing industry.

Joint development of EFL projects on European level

The EFL Co-Creation Days on the 5th and 6th of March 2020 in Amsterdam delivered a number of highly interesting project proposals for the EFL community. As part of our new strategic orientation with a stronger focus on joint development of projects on European level, EFL members pitched their ideas to their fellow members. Project ideas, led by our members, for which participation is open to the whole EFL community. In these times, EFL fully switched to digital cooperation and communication. The new projects are:

1. European Social Index. This project involves co-developing a European Social Index to gain a more complete picture of the people occupying housing stock, thereby adding to the statistical information available about social housing in Europe and allowing housing associations to improve their strategies and programmes, in turn improving residents' lives.
2. Achieving Climate Targets in Housing. This project will equip participants with a greater financial capacity to achieve climate targets for their housing stock (through building a concrete strategy/business plan), giving them both an overview of the general landscape and enabling each member to derive viable ideas and measures for their own company.
3. Map of Digital Business Models in the European housing sector. This project will investigate and identify digital business models in the European Housing Sector, resulting in a Europe-wide map of functioning and (socially or monetarily) profitable digital business models based on housing associations' input, as well as a viable model(s) for participating in PropTechs' growth.
4. Affordable Design Competition. This project involves co-creating and overseeing a design competition that calls on interdisciplinary student teams at different European universities to develop integrated design solutions for affordable living for a new development in the City of Helsinki.

Projects yet to start

Three projects have not been started yet. These are: Planet Smart City Matrix Tool, Care@Home and Design for Living with Dementia. If you are interested in joining in one of these projects or have valuable expertise for one of the project above, let us know. Please feel

free to get in touch with us. Mail to info@ef-l.eu or have a look at our website www.ef-l.eu for more information and online events.



Griffith University
www.griffith.edu.au

Liveability Framework for Medium to High Density Social and Affordable Housing

Ensuring liveability and accessibility in medium to high density urban housing and precincts in our cities is critical to maximise investment and minimise future risks to our community. This Australian Sustainable Built Environment National Research Centre project will investigate current leading practice, considering future innovative options, and case studies. A key outcome will be a Liveability Framework for Medium to High Density Social and Affordable Housing, based on a forward looking set of quality standards, considered against investment costs. This framework will identify key liveability and accessibility elements and will be a tool to help: (i) drive adoption of liveability and accessibility outcomes; and (ii) build the value equation and community understanding to enable industry to deliver whole of life solutions.

Tangible research outcomes will be provided through the two Australian case studies. The key focus areas include:

1. Identify social and cultural value – this will consider how to maximise the potential of medium to high density urban precinct developments, seeking forward looking liveable design outcomes. This will investigate how to minimise potential issues and risks associated with higher density mixed tenancy developments.
2. Identify economic value – this research will extend previous outcomes from the SBEnrc Valuing Social Housing project to identify how: (i) the additional value of providing liveable design outcomes can be potentially captured; and (ii) upfront costs of liveability features can be balanced through whole-of-life benefits to justify investment for developers and the community.
3. Build an understanding of governments' roles - in relation to industry structure and driving new urban forms around next level livability issues and outcomes for higher density urban precincts. This will especially be with regards to regulation and adoption.
4. Improved adoption of liveable design - to better ensure universal access, there is a need to go beyond minimum standards, especially for vulnerable cohorts. This research will take a 'what next' approach based on the need for enhanced access in housing and urban areas for more inclusive outcomes. This will address a whole-of-life approach for individuals and families (e.g. diverse needs, aging and child rearing).

The Liveability Framework for Medium to High Density Urban Housing will:

1. Provide liveability criteria targeting the delivery of social and affordable higher density urban housing and precincts. This will be responsive to both person and place, addressing region-specific criteria.
2. Enable government to effectively test value capture strategies.
3. Identify how upfront costs for specified liveability features can be balanced through whole-of-life benefits to justify investment.
4. Highlight liveable design features with potential benefits at no or minimum construction cost to increase mid to long term benefits.
5. Ensure integration with Australian Building Code Board activity to maximise the impact of research findings.

Project team members include the Western Australia Department of Communities, BGC Residential, the Queensland Department of Housing and Public Works, and Griffith and Curtin Universities.

Further details can be found at <https://sbenrc.com.au/research-programs/1-71/>, or contact the Project Leader, Dr Judy Kraatz j.kraatz@griffith.edu.au



Housing Chair Universitat Rovira i Virgili Tarragona, Spain

www.housing.urv.cat/en/

UNESCO Housing Chair – Rovira i Virgili University (Tarragona, Spain) is organizing a series of free online webinars intended to analyze the impact of COVID-19 to housing and the recent legal reforms regarding rental contracts, mortgages, homelessness and taxation. Previous webinars can be watched at housing.urv.cat/portada/congressos/webinars-vivienda-y-covid-19/



The Institute for Urban Economics (IUE)

www.urbaneeconomics.ru/en

Publications

Recently we published the two following studies on the major Russian metropolitan areas (in English).

1. 16th Annual Demographia International Housing Affordability Survey: 2020. SPECIAL COVERAGE: HOUSING AFFORDABILITY IN RUSSIA

One of the most sound Demographia Housing Affordability Survey 2020 included the SPECIAL COVERAGE ON RUSSIA based on the IUE study Housing affordability in the major Russian metropolitan areas. 3rd quarter 2019. This study was financed by the IUE Endowment. [To our website](#)

2. A Study on the Housing and Urban Planning Sectors Performance Indicators in Major Russian Metropolitan Areas

This research is the first extensive comparative study on the housing and urban planning trends in the largest Russian metropolitan areas over almost 30 years published in English. We believe it will encourage the broad international discussion about the housing and urban economics perspectives of these areas and will induce new comparative studies. The study was financed by the Russian development institution DOM.RF.

On our website we encourage broad international discussion about the housing and urban economics perspectives of the Russian metropolitan areas and will induce new comparative studies. The study was financed by the Russian development institution «DOM.RF».

[To our website](#)

The Institute for Urban Economics (IUE) is a non-government and non-profit organization established in Moscow in 1995. Its mission consists in providing analysis and assistance to cities and regions in social and economic development. Our target audiences are state authorities, local governments, businesses, and non-profit, societal and academic

organizations. The IUE supports Russian cities and regions by providing analytics and elaborating policy measures concerning the key urban economy indicators and sectors under the current pandemic situation – the major metropolitan areas GDP, labor market and housing affordability, urban transportation systems etc.

Most of our analyses can be found on our website (in Russian), selected news and studies we publish on the [English version of our website](#)



London

London School of Economics)

www.lse.ac.uk/

LSE Research projects

LSE London has been awarded Knowledge Exchange and Impact funding for a new project looking at the Priorities for the new Mayor in preparation of the London Mayoral election in May 2020. The project, led by Christine Whitehead and Ian Gordon, will involve renowned researchers Alan Mace, Tony Travers and Stephen Glaister. LSE London was co-organising the Mayoral Hustings last Thursday at the LSE.

LSE London is teaming up with the Regional and Urban Planning Studies programme to organise a series of events on housing, sustainability and advocacy. Progressing Planning will be bringing back alumni from the MSc programme and pairing them up with an academic from LSE.

LSE London has won a Trust for London project exploring the lower end of the Private Renting Sector and how licensing, welfare reforms, and increased taxation are affecting the behaviour of individual private landlords, and rents as well as conditions for tenants. The study will be led by Kath Scanlon and will be running for a year.

We are also undertaking a project on shared ownership and partial equity approaches to make affordable home ownership more accessible for the Building Societies Association and CaCHE.

As part of the government's loneliness strategy, the Ministry of Housing, Communities and Local Government has commissioned research from LSE London and the universities of Bristol and Lancaster into whether residents of community-led housing (CLH) experience less loneliness than people living in conventional housing, and if so why that is. The project, which started in late 2019, will feature in-depth case studies of five CLH communities in England including cohousing, CLTs, co-ops and self build. The findings will help guide decisions about government support for community-led housing.



Oxford Brookes University
School of the Built Environment

<https://www.brookes.ac.uk/be/>

ESRC-AHRC UK-Japan SSH Connections grants

Dr Youngha Cho, Senior Lecturer in School of the Built Environment was awarded the ESRC UK and Japan Connections grant with a project titled 'Enhancing housing affordability and social care in Japan and UK - comparative evaluation of policy and practice' (2019-21). As part of the

project activities, a dedicated website 'UK-Japan Sustainable Housing Network' was launched. www.ukjapanhousinglinks.co.uk/. The website is dual language – English and Japanese – which enables wide dissemination of our network activities and outputs, as well as encouraging active discussion and communication.

Healthy Ageing and Care Research and Knowledge Exchange Network

Oxford Brookes University internally launched the 'Healthy Ageing and Care Research and Knowledge Exchange Network' in Dec 2019. The network aims to fostering and supporting interdisciplinary research; facilitating the translation of the research into benefits for society; and investing in a number of cross-university interdisciplinary research networks. The network responds directly to the UK Government's Industrial Strategy Grand Challenge 'Ageing Society' as well as other national and international policy drivers. Dr Youngha Cho will be working as joint lead of the Healthy Ageing & Care Network for the next two years. If any member of the ENHR would be interested in how the network could develop, please get in touch with Youngha (ycho@brookes.ac.uk).



**Sheffield
Hallam
University**

**Centre for Regional Economic
and Social Research**
Sheffield Hallam University
www4.shu.ac.uk/research/cresr/

In memoriam Ben Pattison

The housing studies community mourns the loss of talented researcher Dr Ben Pattison, who sadly passed away in March. Ben was a key member of the Housing Team at the Centre for Regional, Economic and Social Research at Sheffield Hallam University, having previously worked for the Building and Social Housing Foundation. Ben completed his PhD on the growth of the private rented sector at the University of Birmingham, where he also worked as a teaching associate and researcher. Ben's contribution to the field has been significant and varied, having worked on numerous research projects concerning homelessness, social lettings, Housing Benefit, the housing options of younger people, and the intersection between housing and mental health. Ben was a member of the executive committee of the Housing Studies Association from 2012 to 2018, and also a trustee of a charity providing accommodation for refugees and asylum seekers. He was an outstanding researcher, with an extensive knowledge of scores of topics, but more than anything, Ben was a lovely man.

A [full tribute](#) by Prof. Ian Cole can be found on the Housing Studies Association website.

Welsh Government's Innovative Housing Programme (IHP) research

The Centre for Regional, Economic and Social Research, at Sheffield Hallam University, has been commissioned to research the Welsh Government's Innovative Housing Programme (IHP). This programme, which aims to support innovation in construction techniques, delivery pathways and housing types, is seeking to create 1,000 new affordable homes within the current government's term of office. The research will provide early insights to Welsh Government to help them understand the experiences of grantees, and the barriers to expedient delivery of housing. Dr Aimee Ambrose is leading the research alongside Dr Tom Archer and Dr Emma Bimpson. For more information contact a.ambrose@shu.ac.uk.



**University of Cambridge
Cambridge Centre for Housing
and Planning Research (CCHPR)**

www.cchpr.landecon.cam.ac.uk/

New research published by the Centre

Cambridge Centre for Housing and Planning Research have published a number of papers over the last six months on topics as diverse as Planning for Affordable Housing and Digital Innovation in the UK construction industry. All our publications can be downloaded from our website, www.cchpr.landecon.cam.ac.uk.

Journal articles published by CCHPR Researchers

Burgess, G. & Quinio, V. (2020) Unpicking the downsizing discourse: understanding the housing moves made by older people in England, *Housing Studies*, DOI: 10.1080/02673037.2020.1754346

The housing choices faced by older people are complex and nuanced, and the unhelpful tendency to homogenise them fails to identify those people who move by choice in later life and those who move out of necessity. Further research on the drivers for downsizing, or upsizing, in order to disentangle the complexities of circumstances and decisions behind house moves for the over 55s, has the potential to broaden the downsizing discourse, for the benefit of stakeholders and policymakers alike.

Lord, A., Burgess, G., Gu, Y., & Dunning, R. (2019) Virtuous or vicious circles? Exploring the behavioural connections between developer contributions and path dependence: Evidence from England. *Geoforum*, 106, 244-252.

Based on an empirical study of developer contributions in England, this article seeks to make an association between real estate development in England and the longer term path dependence that has led to an extremely geographically unequal pattern of economic development. It considers the virtuous and vicious cycles of development that arise from behavioural aspects of the planning process.

Ehwi, R.J., Morrison, N. and Tyler, P. (2019) Gated communities and land administration challenges in Ghana: reappraising the reasons why people move into gated communities, *Housing Studies*, DOI: 10.1080/02673037.2019.1702927

Despite the proliferation of gated communities in many developing countries, researchers fail to take account of context-specific factors, and concentrate on demand-based arguments. Household surveys and interviews underpin the research behind this article, which focuses on the land administration challenges facing Ghanaian households and how these influence moves into gated communities.

Maslova, S. and King, R. (2020) Residential trajectories of high-skilled transnational migrants in a global city: Exploring the housing choices of Russian and Italian professionals in London. *Cities*, 96, January 2020.

The paper draws on qualitative data from interviews with Russian and Italian migrants, and analyses their housing preferences and migration plans. Although influenced by high prices in the London housing market and the vagaries of the potential impact of Brexit, the residential trajectories of highly skilled professional migrants vary by nationality and are influenced by the housing culture in their country of origin.

Other published works by CCHPR researchers include:

Branco, R., Alves, S. (2020) Outcomes of Urban Requalification Under Neoliberalism: A Critical Appraisal of the SRU Model. In: Smagacz-Poziemska M., Gómez M., Pereira P., Guarino L.,

Kurtenbach S., Villalón J. (eds) *Inequality and Uncertainty*. Palgrave Macmillan, Singapore, pp 139-158. www.link.springer.com/book/10.1007%2F978-981-32-9162-1

Lee, C., Burgess, G., Kuhn, I., Cowan, A. and Lafortune, L. (2020) Community exchange and time currencies: a systematic and in-depth thematic review of impact on public health outcomes. *Public Health*, 180, pp. 117-128.

Follow [@CCHPR1](https://twitter.com/CCHPR1) on Twitter for our latest research news.



UPPSALA
UNIVERSITET

Uppsala University
Institute for housing and Urban Research

www.uu.se/en/

In memoriam Jim Kemeny (1943-2020)



ENHR member Jim Kemeny, Professor Emeritus at IBF (The Institute for Housing and Urban Research at Uppsala University), has passed away at the age of 77. Between 1994 and 2005, Jim was the first Professor of Sociology at IBF and perhaps its internationally most renowned scholar. His contribution to housing studies were path breaking and his theories on housing regimes and housing politics recurrently serve as points of departure in today's research and debate. As professor at IBF and editor of *Housing, Theory and Society*, Jim was a strong advocate for theory application and theory development in housing studies, always emphasizing the importance of mutual dialogue with general social science perspectives. Some of Jim Kemeny's most important books are: *The Myth of Home-ownership. Private Versus Public Choices in Housing Tenure* (1981), *Housing and Social Theory* (1992), *From Public Housing to the Social Market: Rental Policy Strategies in Comparative Perspective* (1995), and *Social Constructionism in Housing Research* (2004) [with Keith Jacobs and Tony Manzi].

Nils Hertting (Head of Department) and Bo Bengtsson (Professor in Political Science)

Several ENHR Coordination Committee members remember him:

"Jim was a nice guy. His contribution to housing theory was especially important."
Iván Tosics

"This is very sad news, indeed. I'm not sure I can confidently say that I have read all Jim's brilliant publications, but I certainly have a long list of them in my mini library in my office. Yes, he was a great theorist, one of the scholars most frequently cited (globally) in the housing literature. We shall miss his wisdom."
Richard Sendi

"He was also someone I greatly admired; a rare theoretical mind amongst housing scholars. I particularly recall when I invited him to be a keynote speaker at one of our European Social Housing Observatory colloquiums back in 2007. He was very enthusiastic, and despite his poor

health at the time, was willing to do his best to attend. Sadly, shortly before the event he had to cancel as his doctor advised him against travelling. I was so disappointed not to meet him in person! However, we stayed in touch via email.

May he rest in peace.”

Darinka Czischke

“I was saddened to hear of Jim Kemeny’s passing. He was perhaps the most influential theoretical housing researcher of his generation. [...] He was a plenary speaker at our 2004 conference in Cambridge – Christine Whitehead said he was the top choice of young researchers. He also participated in our WG Comparative Housing Policy meeting in Delft in 2010 – joining us online from his local public library. He has been a huge influence for me. He invited me to a workshop at the European University Institute in Florence in 1998. The paper I presented there – charitably one might call it exploratory, but realistically naive – has been rewritten in my head for more than 20 years, but eventually I put pen to paper and it will appear in *Housing Theory and Society*. As more of the generation of pioneering housing researchers pass away, the more acutely I feel the duty to ensure that our discipline continues to develop intellectually and that new generations of researchers are able to thrive.”

Mark Stephens

Other News

Call for papers Housing and Society

The research journal of the Housing Education and Research Association, *Housing and Society* (Taylor & Francis Group), announces a call for papers to appear in a special issue of the journal related to the theme, 'Housing and Health' edited by David Turcotte and Kandace Fisher-McLean.

Housing is fundamental to the quality of life in communities and is an important social determinant of health. Housing that is well designed, located and maintained is essential to mental and physical health of occupants. Many factors influence how housing affects individual and community health, such as physical conditions, behavior of residents, location, neighborhood activities, accessibility, affordability, ambient environmental quality and impacts from manmade and natural disasters. This special issue of *Housing and Society* will highlight the connection between housing and health by addressing the variety of elements that influences this link. We welcome manuscripts with a variety of methodological approaches, study designs and units of analysis, including statistical studies of large data sets, policy impacts and implications on various levels, behavioral studies and local intervention, environmental and impact assessment studies.

Submission deadline = June 30, 2020

Contact: David Turcotte (David_Turcotte@uml.edu)

www.tandfonline.com/loi/rhas20

UK Collaborative Centre for Housing Evidence (CaCHE)

Since the end of March, the UK Collaborative Centre for Housing Evidence (CaCHE) has been bringing together researchers to curate a series of outputs exploring the key issues raised by the pandemic. The advent of the coronavirus pandemic is having an unprecedented impact on society. It cuts across many dimensions of our daily lives, our sense of ontological security, uncertainty about the future and many material concerns as well. The series explores a host of other issues relating to the pandemic: from the meaning of home as a place of 'harm' to best-practice around the protection of homeless people. The outputs include blogs, 'vlogs', webinars and a working paper from a range of academics.

See the full list of outputs so far on the CaCHE website:

www.housingevidence.ac.uk/news/blog-series-coronavirus-housing-and-home/

Providing a safety net during pandemic times

Housing Europe's blog brings you all the latest news about the sector's response to the Coronavirus crisis.

Housing Europe's COVID-19 Blog

www.housingeurope.eu/section-65/blog?topic=covid-19

New members - Welcome

New individual members	Institute	Country	Expertise
Nisan Al Jazairi	AV62 development & Consulting s.r.o.	Czech Republic	Urban development
Josip Pandzic	-	Croatia	East European housing policy
Alexandra Zubrzycka	University of Warsaw, Faculty of Political Science and International Studies, Department of Methodology	Poland	Housing policy in Poland, welfare state, social policy, discourse analysis, interpretive policy analysis

New associate institutional members	City	Country
Institut d'Estidís Regionals i Metropolitans Barcelona	Barcelona	Spain

NEW BOOKS / STUDIES

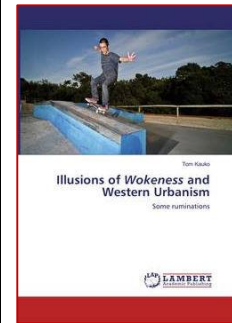
ILLUSIONS OF WOKENESS AND WESTERN URBANISM

By Tom Kauko

Today academics and lay people alike encounter a woke terminology on a daily basis. New concepts are introduced, and their meaning normalized, in order to overturn established worldviews. Much of this relates to climate change and immigration crises, but other issues are also being highlighted, notably, demands arising about favourable treatment of minorities at the expense of native European populations. In particular, the definition of the mission of a corporation has, in some circles, become something else than to make profit. If this is not done and rule policy implemented by the elites, then what is? Because of the seriousness of the rhetoric involved, it is time to question this dangerous new dogma.

Tom Kauko is an ENHR member.

2020, 112 p., ISBN 978-620-2-51794-2 Lambert Academic Publishing
www.morebooks.de



LATER LIFE BORROWING IN A WORLD THAT'S LIVING LONGER

By Kate Scanlon, Fanny Blanc and Christine Whitehead

This London School of Economics report explores the appetite of later life borrowers for products such as standard repayment or interest-only mortgage, retirement interest only mortgages, or equity release plans. We found that those who withdraw equity use funds for discretionary expenditure or to help children. There was little evidence as yet of paying for care, which is something policy makers should address.

The authors are ENHR members.

2020, 35 p.

www.lse.ac.uk/geography-and-environment/research/lse-london/documents/Reports/Family-Building-Society-Final-report-for-WEB-2020.pdf



CALENDAR

Send your information about interesting events to ENHR@tudelft.nl

11-12 June 2020, Philadelphia (USA)

Workshop on securitization

Application deadline = 1 May 2020

Wharton School, University of Pennsylvania

E-mail: housingfinance@wharton.upenn.edu

For more information click [here](#)

15-17 June 2020, Oslo (Norway) CANCELLED

EURA Conference 'Contradictions Shaping Urban Futures'

The objective of EURA 2020 is to better understand the underlying ambiguities and contradictions that shape how urban visions are handled.

For more information: www.eura2020.org/

22 June - 3 July 2020, Delft (The Netherlands) CANCELLED

Summerschool Sustainable Housing from a European Perspective

Summerschool for final year Bachelor students, Master students and PhD students with background knowledge and research interests on sustainable housing and the built environment. Participants who join the whole course, will receive a certificate of participation. Application deadline = 9 March 2020 (limited number of places available)

Application (motivation letter, short CV and summary of research interests to [Geeta Bhoewar](#).

Summerschool coordinator: [Dr. Queena Qian](#).

For practical information: [Christel Swarttouw-Hofmeijer](#).

For more information click [here](#).

29 June - 2 July 2020, Nicosia (Cyprus) RESCHEDULED FOR AUGUST/SEPTEMBER 2021

Unsettled settlements: Housing in unstable contexts 29 June - 2 July 2020

Deadline for abstract submission = 22 March 2020

Notification of abstract approval = 27 April 2020

Early bird registration deadline = 10 May 2020

Full papers deadline = 31 May 2020 (including papers to be considered for the Bengt Turner Award)

www.cyprusconferences.org/enhr2020/

14-18 July 2020, Porto Alegre (Brazil) RESCHEDULED FOR FEBRUARY 23-27, 2021

Fourth Forum of Sociology of the International Sociological Association

Call for abstracts for sessions RC25 Language and Society and RC43 Housing and Built Environment.

Abstract deadline = 30 September 2019

For more information: isaconf.confex.com/isaconf/forum2020/cfp.cgi.

10-13 August 2020, Kuala Lumpur (Malaysia) POSTPONED TO 2021

APNHR 2020 Conference 'Housing Culture, Environment and Urban Development'

Abstract submission = 15 March 2020

Notification of acceptance = 15 April 2020

Full paper submission = 15 July 2020

Registration: umevent.um.edu.my/apnhr2020.

E-mail: apnhr2020@um.edu.my.

For more information click [here](#).

7-17 September 2020, Vienna (Austria), Belgrade (Serbia) and Athens (Greece)

OEAW Summer School Urban housing markets in Central and Southeastern Europe

Summer School for Master students and PhD students with background knowledge and research interests in urban housing markets and real estate. Accredited by the University of Vienna. Certificate of participation of 4 ECTS.

Application deadline = 31 March 2020 (limited number of places available).

Application (motivation letter, CV, certificates, and registration form) to the Summer School organisation.

For more information click [here](#).

8-11 October 2020

Webconference Science and the City: In the era of paradigm shifts

Conference, including a housing session, organized in the context of the Tirana Architecture Week 2020 at Polis University.

Abstract submission deadline = 30 June

Notification of abstract acceptance = 10 July

Full paper submission deadline = 13 August

For more information: futurearchitectureplatform.org/programme/91/tirana-architecture-week-2020-science-and-the-city-in-the-era-of-paradigm-shifts/

WHO IS WHO?

Coordination Committee



Peter Boelhouwer (Chairman)
The Netherlands



Iván Tosics (Vice Chairman)
Hungary



Montserrat Pareja Eastaway
(Vice Chairman) Spain



Mark Stephens (Treasurer)
United Kingdom



Gunvor Christensen
Denmark



Darinka Czischke
The Netherlands



Paddy Gray
Ireland



Marietta Haffner
The Netherlands



Terry Hartig
Sweden



Lena Magnusson Turner
Norway



Sergio Nasarre-Aznar
Spain



Richard Sendi (contact
person CC New Housing
Researchers)
Slovenia



Christiane Thouzellier
France



Catalina Turcu
United Kingdom



Richard Turkington
United Kingdom

Ad hoc members



Institutional members

Below you find their current addresses and contact persons of the ENHR Institutional Members. There is, however, room for more members. Visit www.enhr.net or contact the ENHR Office (ENHR@tudelft.nl) for institutional membership information.

ALBANIA

POLIS University, Department of Urban Planning and Management, Rr. Bylis, 12, 1051, Tirana, ALBANIA. Contact: Elona Karafili
www.universitetipolis.edu.al

AUSTRALIA

Australian Housing and Urban Research Institute, Level 1, 114 Flinders Street, 3000, Melbourne, Victoria, AUSTRALIA. Contact: Anthony Smeaton www.ahuri.edu.au
Griffith University, Urban Research Program, 170 Kessels Road, 4111 Nathan, AUSTRALIA. Contact: Judy Kraatz www.griffith.edu.au

AUSTRIA

University of Vienna, Department of Sociology, Rooseveltplatz 2, 1090, Vienna, AUSTRIA. Contact: Kathrin Wagner www.soz.univie.ac.at
Vienna University of Technology, Center of Public Finance and Infrastructure Policy, Department of Spatial Planning, Regalgasse 5, A-1040, Vienna, AUSTRIA. Contact: Justin Kadi raum.tuwien.ac.at

BELGIUM

Hasselt University, Faculty of Architecture and Arts, Campus Diepenbeek, Agoralaan Building E, 3590 Diepenbeek, Belgium. Contact: Jan Vanrie www.uhasselt.be/fac-architectuur-en-kunst

CZECH REPUBLIC

Institute of Sociology, Academy of Sciences of the Czech Republic, Jilská 1, 110 00, Prague 1, CZECH REPUBLIC. Contact: Veronika Fronkova www.soc.cas.cz

DENMARK

Aalborg University Copenhagen, Danish Building Research Institute (SBI), Department of Town, Housing and Property, A.C. Meyers Vænge 15, 2450, København SV, DENMARK. Contact: Rikke Skovgaard Nielsen www.sbi.dk

Knowledge Centre for Housing Economics, Boligøkonomisk Videncenter, c/o Realdania, Jarmers Plads 2, 551, Copenhagen V, DENMARK. Contact: Curt Lilieregreen www.bvc.dk

VIVE – The Danish Center for Social Science Research, Work and Inclusion, Herluf Trolles Gade 11, 1052, Copenhagen, DENMARK. Contact: Gunvor Christensen www.sfi.dk

FRANCE

CNRS UMR 7218 LAVUE, Université

Paris Ouest, bât W, 200 Avenue de la République, 92001, Nanterre cedex, FRANCE. Contact: Claire Lévy-Vroelant www.lavue.cnrs.fr

Interdisciplinary Laboratory on Solidarities, Societies, Territories LISST (UTM-CNRS-EHESS) UMR 5193 and Recherche Habitat-Logement (REHAL), University of Toulouse – Le Mirail, Maison de la Recherche, 5 allées Antonio Machado, 31058, Toulouse Cedex 9, FRANCE. Contact: Christiane Thouzellier w3.lisst.univ-tlse2.fr and <http://rehal.fr>
Lab'Urba, Cité Descartes – Bâtiment Bienvenüe, 14-20 boulevard Newton – Champs-sur-Marne, 77454 Marne-la-Vallée cedex 2, France. Contact : Sabine Hermenault <http://www.laburba.fr/>

GERMANY

ILS-Research Institute for Regional and Urban Development GmbH, Brüderweg 22-24, 44135, Dortmund, GERMANY. Contact: Heike Hanhörster www.ils-forschung.de
Institut der Deutschen Wirtschaft Köln, PO Box 101942, 50459 Cologne, GERMANY. Contact: Michael Voigtländer <http://www.iwkoeln.de/en>
Leibniz Institute of Ecological and Urban Development (IOER), Weberplatz 1, 01217, Dresden, GERMANY. Contact: Andreas Blum www.ioer.de
Ruhr-University Bochum, Institute for Housing, Real Estate and Urban and Regional Development (InWIS), Springorumallee 5, 44795, Bochum, GERMANY. Contact: Torsten Bölting www.inwis.de

HUNGARY

Metropolitan Research Institute, (Városkutató Kft), Lónyay utca 34, III. 21., 1093, Budapest, HUNGARY. Contact: Iván Tosics www.mri.hu

IRELAND

Economic and Social Research Institute (ESRI), Sir John Rodgerson's Quay, Dublin 2 IRELAND D02 K138. Contact: Conor O'Toole. www.esri.ie
University College Dublin, School of Social Policy, Social Work and Social Justice, Hanna Sheehy-Skeffington Building, Belfield, D04 N9Y1 Dublin, IRELAND. Contact: Michelle Norris <http://www.ucd.ie/socialpolicyworkjustice/>

NORWAY

Oslo and Akershus University College of Applied Sciences, HiOA, PO Box 4 St. Olavs plass, 0130 Oslo Norway.

Contact: Hans Christian Sandlie www.hioa.no/eng

PORTUGAL

DINÂMIA-CET – Centro de estudos sobre a Mudança Socioeconómica e o Território, Av. das Forças Armadas, Ed. ISCTE-IUL, 1649-026, Lisbon PORTUGAL. Contact: Maria João Machado dinamiacet.iscte-iul.pt/

RUSSIA

The Institute for Urban Economics, 20/1, Tverskaya street, 125009, Moscow, RUSSIA. Contact: Nadezhda B. Kosareva www.urbanecomomics.ru

SLOVENIA

University of Ljubljana, Faculty for Social Sciences, Centre for Welfare Studies, Kardeljeva pl. 5, 1000, Ljubljana, SLOVENIA. Contact: Srna Mandic www.fdv.uni-lj.si/English/Office_IC/
Urban Planning Institute of the Republic of Slovenia, Trnovski pristan 2, 1127, Ljubljana, p.p. 4717, SLOVENIA. Contact: Richard Sendi www.uirs.si

SPAIN

Basque Research Institute for Housing (Observatorio Vasco de la Vivienda) Gobierno Vasco-Eusko Jaurilaritza – c/ Donostia-San Sebastian 1, 01010 Vitoria-Gasteiz, SPAIN. Contact: Elena Sánchez Fernández www.euskadi.net/viviendaeuskadi
Housing Chair, Rovira i Virgili University - Campus Catalunya, Housing Chair, Av. Catalunya 35, 43002 Tarragona, SPAIN. Contact: Sergio Nasarre Aznar <http://housing.urv.cat/en/cover/>
University of Barcelona, Faculty of Economics and Business, Avinguda Diagonal, 696. 4a planta, 08034, Barcelona, SPAIN. Contact: Montserrat Pareja Estaway www.crit.ub.edu

SWEDEN

Lund University, The School of Social Work, Box 23, 221 00 Lund, SWEDEN. Contact: Marcus Knutagård. www.soch.lu.se
Malmö University, Department of Urban Studies, 205 06, Malmö, SWEDEN. Contact: Carina Listerborn www.mah.se
Royal Institute of Technology (KTH), Department of Urban Planning and Environment, School of Architecture and the Built Environment, 100 44, Stockholm, SWEDEN. Contact: Tigran Haas www.kth.se/en/abe/om-skolan/organisation/inst/som
Stockholm University, Department of Human Geography, Svante Arrhenius väg 8, 10691 Stockholm, SWEDEN.

Contact: Eva Andersson
www.humangeo.su.se/english/
Umeå School of Business and Economics, Biblioteksgränd 6, SE-90187, Umeå, SWEDEN. Contact: Lars Lindbergh www.usbe.umu.se
Uppsala University, Institute for Housing & Urban Research, Box 514, SE-75120, Uppsala, SWEDEN. Contact: Nils Hertting
www.ibf.uu.se/index_eng.html

SWITZERLAND

ETH Wohnforum ETH CASE, Centre for Research on Architecture, Society & the Built Environment, ETH Hönggerberg, HIL G65 1, 8093, CH-8093, SWITZERLAND. Contact: Marie Glaser www.wohnforum.arch.ethz.ch

THE NETHERLANDS

Amsterdam Institute for Social Science Research (AISSR), PO Box 15629, 1001 NC, Amsterdam, THE NETHERLANDS. Contact: Puikang Chan <http://aissr.uva.nl/>

Delft University of Technology, Faculty of Architecture and the Built Environment, OTB - Research for the Built Environment, PO Box 5043, 2600 GA, Delft, THE NETHERLANDS. Contact: Manja Stalman www.mbe.bk.tudelft.nl

Institute for Housing and Urban Development Studies (IHS), PO Box 1935, 3000 BX, Rotterdam, THE NETHERLANDS. Contact: Maartje van Eerd & Alonso Ayala www.ihs.nl

Netherlands Environmental Assessment Agency, (Planbureau voor de Leefomgeving (PBL)), PO Box 30314,

2500 GH, The Hague, THE NETHERLANDS. Contact: Frans Schilder www.pbl.nl

TURKEY

Istanbul Technical University, Faculty of Architecture, Housing Research & Education Centre (HREC), Taskisla No: 134-136, 34437, Taksim-Istanbul, TURKEY. Contact: Yurdanur Dülgeroğlu www.hrec.itu.edu.tr

UNITED KINGDOM

Heriot-Watt University (The Urban Institute and I-SPHERE), Edinburgh, EH14 4AS, Scotland, United Kingdom. Contact: Mark Stephens <https://www.hw.ac.uk/schools/energy-geoscience-infrastructure-society/the-urban-institute.htm> and <https://www.hw.ac.uk/schools/energy-geoscience-infrastructure-society/research/i-sphere.htm>

Housing Centre, BRE Environment, Bucknalls Lane, WD25 9XX, Garston, Watford, Herts, UNITED KINGDOM.

Contact: Jack Hulme www.bre.co.uk
National Housing Federation, 25 Procter Street, WC1V 6NY, London, UNITED KINGDOM. Contact: Tristan Carlyon www.housing.org.uk

Oxford Brookes University, Department of Real Estate and Construction, Gipsy Lane, OX3 9BP, Oxford, UNITED KINGDOM. Contact: Youngha Cho www.brookes.ac.uk

Sheffield Hallam University, Centre for Regional Economic & Social Research, Pond St., S1 1WB, Sheffield, UNITED KINGDOM.

Contact: Tom Archer
www.shu.ac.uk/cres/

University of Birmingham, School of Social Policy, Muirhead Tower, Edgbaston, B15 2TT, Birmingham, UNITED KINGDOM. Contact: Helen Harris

www.birmingham.ac.uk/schools/social-policy/index.aspx

University of Cambridge, Cambridge Centre for Housing & Planning Research, 19 Silver Street, CB3 9EP, Cambridge, UNITED KINGDOM. Contact: Gemma Burgess www.cchpr.landecon.cam.ac.uk

University of Glasgow, Urban Studies, School of Social and Political Sciences, 25, Bute Gardens, G12 8RS, Glasgow, UNITED KINGDOM. Contact: Sabrina Grant

<http://www.gla.ac.uk/subjects/urbanstudies/>

University of Lincoln, Policy Studies Research Centre, Brayford Pool, LN6 7TS, Lincoln, GREAT BRITAIN. Contact: Dr. Peter Somerville www.lincoln.ac.uk

University of Stirling, Department of Applied Social Science, FK9 4LA, Stirling, UNITED KINGDOM. Contact: Isobel Anderson www.stir.ac.uk

University of York, Centre for Housing Policy, Heslington, YO1 5DD York, UNITED KINGDOM. Contact: Sally Pulleyn www.york.ac.uk/inst/chp

ASSOCIATE INSTITUTIONAL MEMBERS

AUSTRIA

Österreichischer Verband Gemeinnütziger Bauvereinigungen - Revisionsverband (GBV), Department of Housing Policy and Research, Bösendorferstraße 7, 1010, Vienna, AUSTRIA. Contact: Gerlinde Gutheil-Knopp-Kirchwald www.gbv.at

BELGIUM

EMF-ECBC, Rue de la Science 14, 1040, Brussels, BELGIUM. Contact: D.Westig www.hypo.org
European Social Housing Observatory, CECODHAS-European Liaison Committee, 18 Square de Meeus, 1050, Brussels, BELGIUM. Contact: Alice Pittini www.housingeurope.eu

DENMARK

Finance Denmark, Amaliegade 7, 1256 Copenhagen K, DENMARK. Contact: Sandie Wrona www.finansdanmark.dk

FINLAND

Housing Finance and Development Centre of Finland, PL 30, 1514, Lathi, FINLAND. Contact: Kaisi Hantula www.ara.fi
Ministry of the Environment, Department of the Built Environment, PO Box 35, 00023, Government, FINLAND. Contact: Jaana Nevalainen www.environment.fi

GERMANY

Federal Institute for Research on Building, Urban Affairs & Spatial Development within the Federal Office for Building and Regional Planning, Deichmanns Aue. 31-37, 531797, Bonn, GERMANY. Contact: Jonathan Franke www.bbsr.bund.de
Institut Wohnen und Umwelt GmbH, Rheinstrasse 65, 64295, Darmstadt, GERMANY. Contact: Martin Vache www.iwu.de

IRELAND

Department of Housing, Planning, Community & Local Government, Social Housing Policy & Rental Policy Division, Custom House, D01 W6X0 Dublin 1, IRELAND. Contact: Caroline Timmons www.housing.gov.ie
Dublin Region Homeless Executive, Dublin, City Council, Block 1, Floor 2, Civic Offices, Wood Quay, Dublin 8, IRELAND. Contact: Dáithí Downey www.homelessdublin.ie
Housing and Sustainable Communities Agency, 53-54 Mount Street Upper, D02KT73, Dublin 2, IRELAND. Contact: David Silke www.housingagency.ie
Residential Tenancies Board, Communication and Research Department, O'Connell Bridge House, D'Olier Street, D02 RR99, Dublin, IRELAND. Contact: Brian Gallwey. <https://www.rtb.ie/>
THRESHOLD, 21 Stoneybatter, Dublin 7, IRELAND. Contact: Aideen Hayden www.threshold.ie

MALTA

Housing Authority Malta, Ministry for Family Children's Rights and Social Solidarity, 15, Casa Floriani, Triq Pietro Floriani, FRN 1060, Floriana, MALTA. Contact: Leonid McKay <https://housingauthority.gov.mt/en/Pages/default.aspx>

NORWAY

The Ministry of Local Government and Modernisation, The Housing and Building Department, PO Box 8112 DEP, 0032, Oslo, NORWAY. Contact: Kjersti Halvorsrud www.regjeringen.no/kmd
The Norwegian State Housing Bank, PO Box 824, 3007, Drammen, NORWAY. Contact: Ingvild Fosse www.husbanken.no

SLOVAK REPUBLIC

Ministry of Transport, Construction and Regional Development of the Slovak Republic, Housing and Urban Development Policy Department, Námetie slobody č. 6, 810 05, Bratislava, SLOVAK REPUBLIC. Contact: Elena Szolgayova www.mindop.sk/index/index.php

SPAIN

Barcelona's Municipal Institute of Housing and Renovation (IMHAB), Dr. Aiguader 36, Barcelona SPAIN. Contact: Natalia Frers Teberobsky. www.habitatge.barcelona/ca/qui-som/institut-municipal-habitatge-rehabilitacio
Catalan Housing Agency (ADIGSA), Calle Diputación, 92, 08015, Barcelona, SPAIN. Contact: Jordi Bosch www.agenciahabitatge.cat/wps/portal
Diputació de Barcelona, Observatori Local d'Habitatge. Oficina de Promoció i Gestió

d'Habitatge, Comte d'Urgell, 187, 2n pis, 08036, Barcelona, SPAIN. Contact: Lídia Garcia Ferrando
www.diba.cat/web/hua/observatori-local-d-habitatge

Institut D'estudis Regionals I Metropolitans Barcelona (OHB), Plaça De La Vila De Gracia 6 baixos 08012, Barcelona, SPAIN. Contact: Anna Verges, <https://iermb.uab.cat/ca/>

SWEDEN

International Union of Tenants, Norrlandsgatan 7, PO Box no. 7514, SE-103 92, Stockholm, SWEDEN.
Contact: Annika Wahlberg

National Board of Housing, Building and Planning (Boverket), PO Box 534, 371 23, Karlskrona, SWEDEN. Contact: Olov Schultz www.boverket.se

THE NETHERLANDS

Amsterdamse Federatie van Woningcorporaties, Delflandlaan 4bg, 1062 EB, Amsterdam, THE NETHERLANDS. Contact: Jeroen van der Veer www.afwc.nl

Working Groups and Coordinators

WG	Coordinators
Collaborative Housing	<ul style="list-style-type: none"> Claire Carriou, University of Toulouse - Le Mirail, Interdisciplinary Laboratory on Solidarities, Societies, Territories LISST (UTM-CNRS-EHESS) UMR 5193 and Recherche Habitat-Logement (REHAL), France, claire.carriou@gmail.com Darinka Czischke, Delft University of Technology, Faculty of Architecture and the Built Environment, THE NETHERLANDS, D.K.Czischke@tudelft.nl Richard Lang, Johannes Kepler University Linz, Institute of Innovation Management, Linz, AUSTRIA, richard.lang@jku.at Henrik Larsen, Department of Human Geography, Lund University, SWEDEN, henrik_gutzon.larsen@keg.lu.se
Comparative Housing Policy	<ul style="list-style-type: none"> Marja Elsinga, Delft University of Technology, Faculty of Architecture and the Built Environment, OTB - Research for the Built Environment, THE NETHERLANDS, M.G.Elsinga@tudelft.nl Michelle Norris, School of Applied Social Science, University College Dublin, IRELAND, michelle.norris@ucd.ie Mark Stephens, Heriot-Watt University, UNITED KINGDOM, m.stephens@hw.ac.uk
Disadvantaged Urban Neighbourhoods and Communities	<ul style="list-style-type: none"> Eva Andersson, Stockholm University, Department of Human Geography, SWEDEN, eva.andersson@humangeo.su.se Mark Livingston, University of Glasgow, Urban Studies, School of Social and Political Sciences, GREAT BRITAIN, m.livingston@lss.gla.ac.uk
East European Housing & Urban Policy	<ul style="list-style-type: none"> Richard Sendi, Urban Planning Institute of the Republic of Slovenia, SLOVENIA, Richards@uirsi.si Sasha Tsenkova, International Development, University of Calgary, CANADA, tsenkova@ucalgary.ca
Energy Efficiency and Environmental Sustainability of Housing	<ul style="list-style-type: none"> Ebru Ergöz Karahan, Ozyegin University, TURKEY, eergoz@gmail.com Catalina Turcu, University College London, Bartlett School of Planning, UNITED KINGDOM, catalina.turcu@ucl.ac.uk Henk Visscher, Delft University of Technology, Faculty of Architecture and the Built Environment, OTB - Research for the Built Environment, THE NETHERLANDS. h.j.visscher@tudelft.nl
Home Ownership and Globalisation	<ul style="list-style-type: none"> Caroline Dewilde, University of Tilburg, Department of Sociology, THE NETHERLANDS. c.l.dewilde@uvt.nl Justin Kadi, Vienna University of Technology, Centre for Public Finance and Infrastructure Policy, AUSTRIA. Justin.kadi@tuwien.ac.at Richard Ronald, Department of Geography, Planning and International Development Studies, University of Amsterdam, THE NETHERLANDS. R.Ronald@uva.nl
Housing, Migration and Family Dynamics	<ul style="list-style-type: none"> Rory Coulter, University of Cambridge, Department of Sociology, UNITED KINGDOM. rcc46@cam.ac.uk Tomáš Samec, Institute of Sociology of the Academy of Sciences of the Czech Republic, CZECH REPUBLIC tomas.samec@soc.cas.cz Michael Thomas, University of Groningen, Faculty of Spatial Sciences, THE NETHERLANDS. m.i.thomas@rug.nl
Housing & Living Conditions of Ageing Populations	<ul style="list-style-type: none"> Marianne Abramsson, Stockholm University, Department of Human Geography, SWEDEN. marianne.abramsson@humangeo.su.se Blanca Deusdad, Rovira i Virgili University, SPAIN. blanca.deusdad@urv.cat Sarah Hillcoat-Nallétamby, Centre for Innovative Ageing (CIA), Swansea University, School of Human and Health Sciences, GREAT BRITAIN. s.hillcoat-nalletamby@swansea.ac.uk
Housing Economics	<ul style="list-style-type: none"> Michael Ball, Department of Real Estate & Planning, University of Reading Business School, GREAT BRITAIN. m.ball@henley.reading.ac.uk Viggo Nordvik, NOVA – Norwegian Social Research, NORWAY. vnord@oslomet.no
Housing Finance	<ul style="list-style-type: none"> Andreja Cirman, University of Ljubljana, Faculty of Economics, SLOVENIA. andreja.cirman@ef.uni-lj.si Michael Voigtländer, Institut der Deutschen Wirtschaft Köln, GERMANY. voigtlaender@iwkoeln.de
Housing in Developing Countries	<ul style="list-style-type: none"> Claudio Acioly Jr., United Nations Human Settlements Programme, Un-Habitat, KENYA. claudio.acioly@unhabitat.org Isobel Anderson, University of Sterling, Dept. of Applied Social Science, GREAT BRITAIN. isobel.anderson@stir.ac.uk Yurdanur Düğleroğlu (contact person), Faculty of Architecture, Istanbul Technical University, TURKEY. yukselyu@itu.edu.tr Gülden Erkut, Istanbul Technical University, Faculty of Architecture, Urban and Regional Planning, TURKEY. gerkut@itu.edu.tr Kosta Mathéy, PAR/TUD, GERMANY. kmathey@aol.com
Housing Law	<ul style="list-style-type: none"> Maria Olinda Garcia, Coimbra University, Faculty of Law, PORTUGAL. ogarcia@fd.uc.pt Padraic Kenna, National University of Ireland, Centre for Housing Law, Rights and Policy, School of Law, IRELAND. Padraic.kenna@nuigalway.ie

European Network for Housing Research

	<ul style="list-style-type: none"> • Michel Vols, University of Groningen, Faculty of Law and Honours College, THE NETHERLANDS. m.vols@rug.nl
Land Markets and Housing Policy	<ul style="list-style-type: none"> • Willem Korthals Altes, Delft University of Technology, Faculty of Architecture and the Built Environment, OTB - Research for the Built Environment, THE NETHERLANDS. W.K.KorthalsAltes@tudelft.nl • Berit Nordahl, NIBR, NORWAY. Berit-Irene.Nordahl@oslomet.no
Metropolitan Dynamics: Urban Change, Markets and Governance	<ul style="list-style-type: none"> • Christiane Thouzellier, University of Toulouse, FRANCE. cthouzel@univ-tlse2.fr • Iván Tosics, Metropolitan Research Institute, Budapest, HUNGARY. tosics@mri.hu
Minority Ethnic Groups and Housing	<ul style="list-style-type: none"> • Gideon Bolt, Urban and Regional Research Centre Utrecht, Faculty of Geosciences, Utrecht University, THE NETHERLANDS. g.s.bolt@uu.nl • Rikke Skovgaard Nielsen, Aalborg University Copenhagen, Danish Building Research Institute (SBI), DENMARK. rsn@sbi.aau.dk
Policy and Research	<ul style="list-style-type: none"> • Jaana Nevalainen, Ministry of Environment, Housing and Building Department, FINLAND. Jaana.Nevalainen@ym.fi • Steffen Wetzstein, Brandt School of Public Policy/University of Erfurt, GERMANY, steffen.wetzstein@uni-erfurt.de
Private Rented Markets	<ul style="list-style-type: none"> • Aideen Hayden, University College Dublin, IRELAND. aideenhayden@gmail.com • Paddy Gray, University of Ulster, Centre for Research in Property, School of the Built Environment, NORTHERN IRELAND, pf.gray@ulster.ac.uk
Research on Residential Architectural and People	<ul style="list-style-type: none"> • Birgit Jürgehake, Delft University of Technology, Faculty of Architecture and the Built Environment, THE NETHERLANDS. b.jurgehake@tudelft.nl • Maja Lorbek, Vienna University of Technology, AUSTRIA. maja.lorbek@tuwien.ac.at • Ahsen Ozsoy, Istanbul Technical University; Faculty of Architecture, TURKEY. ozsoya@itu.edu.tr
Residential Context of Health	<ul style="list-style-type: none"> • Emma Baker, School of Architecture and Built Environment, University of Adelaide, AUSTRALIA. emma.baker@adelaide.edu.au • Terry Hartig, Institute for Housing & Urban Research, Uppsala University, SWEDEN. terry.hartig@ibf.uu.se
Residential Environments and People	<ul style="list-style-type: none"> • Jana Zdrahalova, Czech Technical University, Faculty of Architecture, CZECH REPUBLIC. zdrahjan@fa.cvut.cz • Hélène Bélanger, Département d'études urbaines et touristiques, École des Sciences de la Gestion, Université du Québec à Montréal, CANADA. belanger.helene@uqam.ca
Social Housing and Globalization	<ul style="list-style-type: none"> • Claire Levy-Vroelant, Université de Paris. FRANCE. clevyvroelant@gmail.com • Christoph Reinprecht, University of Vienna, Institute for Sociology, AUSTRIA. christoph.reinprecht@univie.ac.at • Sasha Tsenkova, International Development, University of Calgary, CANADA. tsenkova@ucalgary.ca
Social Housing: Institutions, Organisations and Governance	<ul style="list-style-type: none"> • Anita Blessing, European Federation for Living (EFL), THE NETHERLANDS. ablessing@ef-l.eu • Gerard van Bortel, Delft University of Technology, Faculty of Architecture and the Built Environment, THE NETHERLANDS. g.a.vanBortel@tudelft.nl • Nicky Morrison, University of Cambridge, UNITED KINGDOM. nm10001@cam.ac.uk • Marco Peverini, Politecnico di Milano, ITALY. marco.peverini@polimi.it
Southern European Housing	<ul style="list-style-type: none"> • Thorsten Heitkamp, TU Dortmund University, GERMANY, thorsten.heitkamp@udo.edu • Sandra Marques Pereira, DINÂMIA'CET/ ISCTE-IUL- Instituto Universitário de Lisboa, PORTUGAL s.marquespereira11@gmail.com / ssgmp@iscte.pt • Dimitra Siatitsa, Harokopeio University, GREECE, dimisiat@gmail.com • Héctor Simón-Moreno, University Rovira I Virgili, SPAIN, hector.simon@urv.cat
Towards Sustainable Communities and Housing: Actors, Interventions and Solutions	<ul style="list-style-type: none"> • Jesper Ole Jensen, Danish Building Research Institute (SBI), Department of Town, Housing and Property, Aalborg University Copenhagen, DENMARK. joj@sbi.aau.dk • Montserrat Pareja-Eastaway, Departament de Teoria Economica, Escola d'Empresarials, Universitat de Barcelona, SPAIN. mpareja@ub.edu • Nessa Winston, University College Dublin, School of Applied Social Science, IRELAND, nessa.winston@ucd.ie
Welfare Policy, Homelessness, and Social Exclusion	<ul style="list-style-type: none"> • Evelyn Dyb, Norwegian Institute for Urban & Regional Research (NIBR), NORWAY. evelyn.dyb@oslomet.no • Joe Finnerty, Dept. of Applied Social Studies, Housing Research Project, University College, IRELAND. j.finnerty@ucc.ie • Magdalena Mostowska, University of Warsaw, POLAND. mmostowska@uw.edu.pl • Yoshihiro Okamoto, Chukyo University, School of Business and Public Policies, JAPAN. yokamoto@mecl.chukyo-u.ac.jp

European Network for Housing Research

WG in preparation	
Housing and Refugees	<ul style="list-style-type: none">• Jennifer Duyne Barenstein, ETH Wohnforum ETH CASE, Centre for Research on Architecture, Society, SWITZERLAND, duyne@arch.ethz.ch• Silvia Mugnano, Università degli Studi di Milano Bicocca, Dipartimento di Sociologia e Ricerca Sociale, ITALY, silvia.mugnano@unimib.it• Eli Støa, Department of Architectural Design & Management, Norwegian University of Science & Technology, NORWAY. eli.stoa@ntnu.no

New Housing Researchers Colloquium	Coordination Committee Contact Person <ul style="list-style-type: none">• Richard Sendi, Urban Planning Institute. SLOVENIA richards@uirsi.si
---	--

ENHR's cooperations

Sister organisations	
 Asian Pacific Network for Housing Research (APNHR) fac.arch.hku.hk/upad/apnhr	
Partners (signed Memorandum of Understanding)	
 European Federation for Living (EFL) www.ef-l.eu	 Housing Studies Association (HSA) housing-studies-association.org
 Urban Affairs Association (UAA) urbanaffairsassociation.org/	
ENHR supports	ENHR is member of
 Critical Housing Analysis www.housing-critical.com	 European Housing Forum www.europeanhousingforum.eu/

NEWSLETTER DEADLINES

This newsletter is sent to members of the ENHR, institutions as well as individuals. If you are not a member of ENHR, please visit www.enhr.net/join.php to join ENHR.

The next newsletter will be distributed in September 2020.

Publication schedule:
February – May – September – December

ENHR Office

Faculty of Architecture and the Built Environment // Delft University of Technology
PO Box 5043 // 2600 GA Delft // The Netherlands

☎ +31 6 286 16 398 // ENHR@tudelft.nl // www.enhr.net

www.facebook.com/ENHR.net // [@ENHR_Office](https://twitter.com/ENHR_Office)

Editor: Dirk Dubbeling // **ISSN:** 1014-8027

